

scandiahus

SWEDISH ENERGY SAVING HOMES



BOOK OF INSPIRATION



HOUSE DESIGN IDEAS

5 BUNGALOWS & CHALETS

- 6 The Acer
- 8 The Hawthorns
- 10 The Sycamore
- 12 The Acacia
- 14 The Willows
- 16 Sea View
- 18 The Hambledene
- 20 The Chiddingstone

23 BARNES

- 24 Little Barn
- 26 Honeysuckle Barn
- 28 Meadow Barn
- 30 Brewhouse Barn
- 32 Malthouse Barn
- 34 Linhay Barn
- 36 Highfield Barn

39 TRADITIONAL

- 40 The Colchester
- 42 The Banbury
- 44 The Amberley
- 46 The Courtfield
- 48 The Langford
- 50 Oakleigh House
- 52 The Cramlington
- 54 The Lockwood
- 56 The Ridgeway
- 58 The Woodlands
- 60 The Hamshaw
- 62 The Hanover

65 CONTEMPORARY

- 66 The Lodge
- 68 The Cavallo
- 70 The Riviera
- 72 The Adelia
- 74 The Hill View
- 76 The Pines
- 78 The Milan
- 80 The Florence

WELCOME TO SCANDIA-HUS

We design and build beautiful, bespoke and remarkably energy efficient properties throughout the UK, and have been doing so for over 45 years.

We have a wealth of knowledge at our disposal and our friendly team of professionals are here to guide you through the self-build process with full support and advice.

All our homes are individually designed, so this book is simply to give you inspiration for the creation of your dream home. If you are particularly interested in modern house styles, we also have a separate brochure dedicated to Contemporary Designs.



BUNGALOWS & CHALETs

Bungalows remain a firm favourite with people across the UK. Single storey living can offer long term comfort and a connection to the outside from every room.

A number of beautiful architectural features suit this style of property, including vaulted ceilings, roof windows and gable glazing.

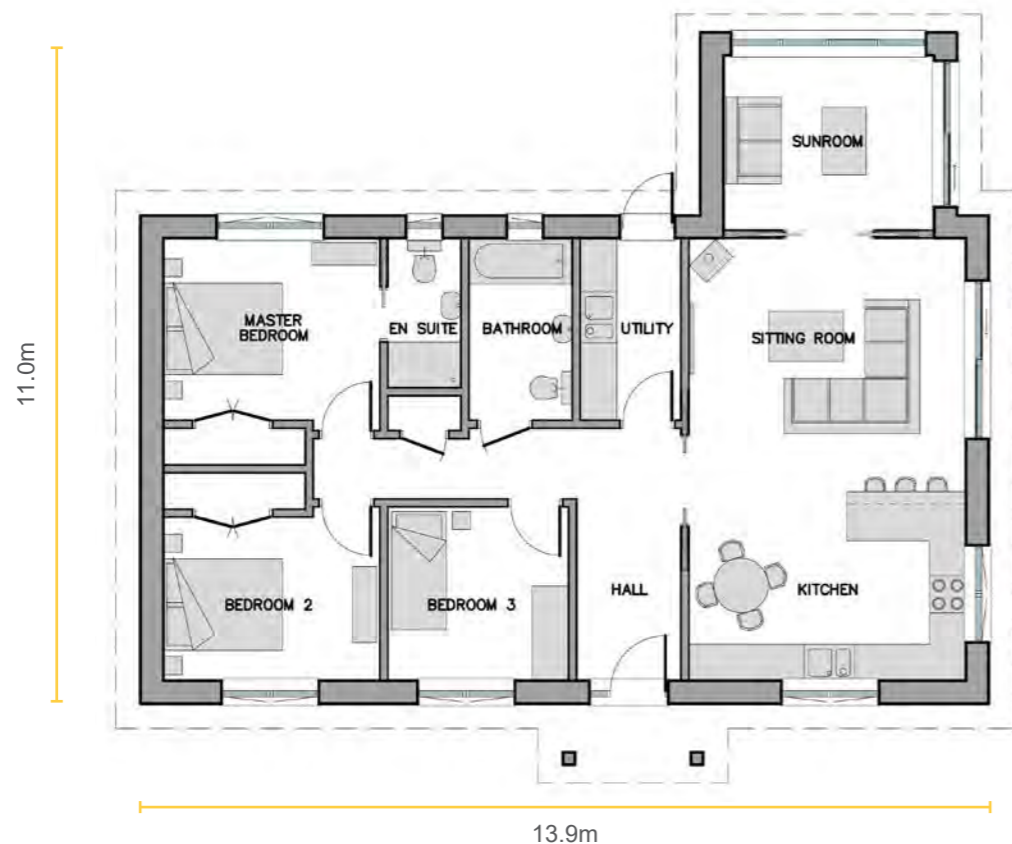
All of our bungalows can also be built as chalets, with a steeper pitched roof allowing for flexibility with rooms, future-proofing your home.

Whether you are looking for a spacious open-plan flow or more of a cosy cottage feel, our in-house design team will ensure that the layout and look of your new home reflects you and your lifestyle.



THE ACER

A simple but stylish design that connects the inside to the outside. An open plan living space with sliding doors in both the sunroom and sitting room lead directly to the garden. There are three bedrooms, two of which are double, and a family bathroom.



Gross External Area: 124 sq.m (1,335 sq.ft)

Maximum Ridge Height: 5.6m

Ground Floor

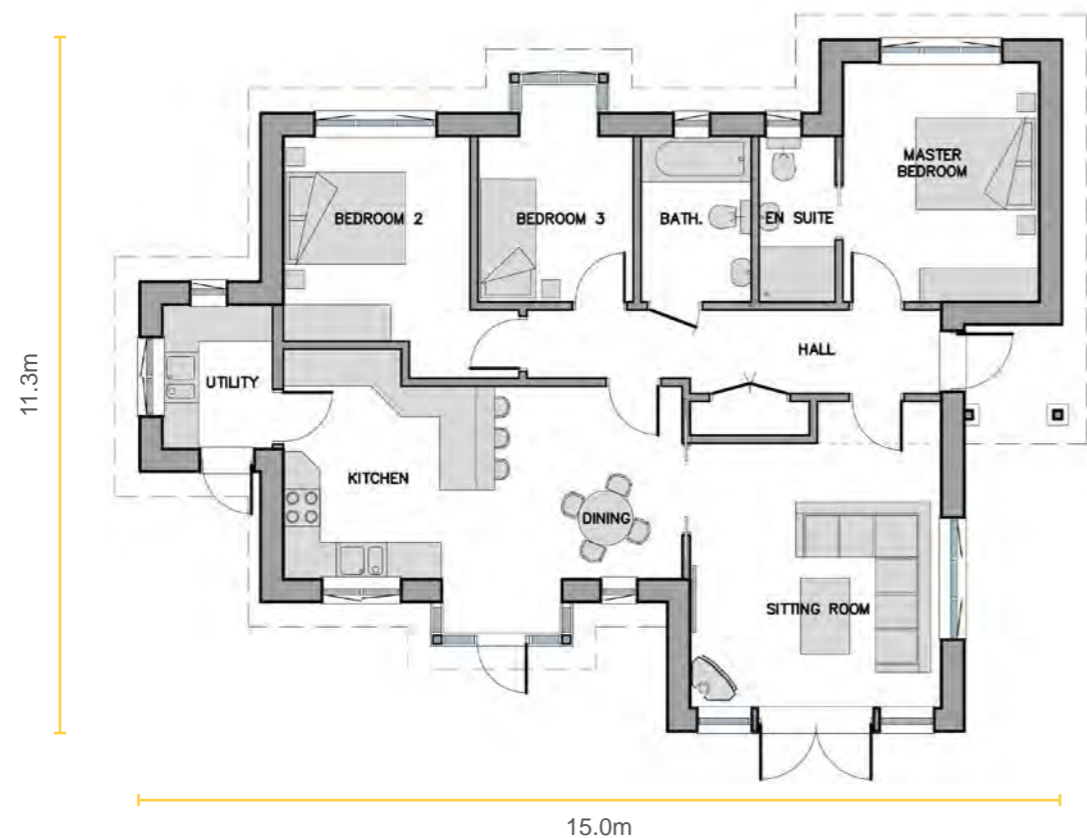
Sitting Room: 4.5m x 4.2m
 Kitchen: 4.5m x 3.1m
 Sunroom: 3.5m x 2.9m
 Utility: 3.0m x 1.7m

Master Bedroom: 3.6m x 3.0m
 Bedroom 2: 3.6m x 2.7m
 Bedroom 3: 3.0m x 2.9m



THE HAWTHORNS

This popular design includes a stunning vaulted ceiling in the sitting room with full height apex glazing, as well as a large open plan kitchen/dining area. The rear of the property incorporates three bedrooms, the master being ensuite.



Gross External Area: 121 sq.m (1,302 sq.ft)

Maximum Ridge Height: 6.0m

Ground Floor

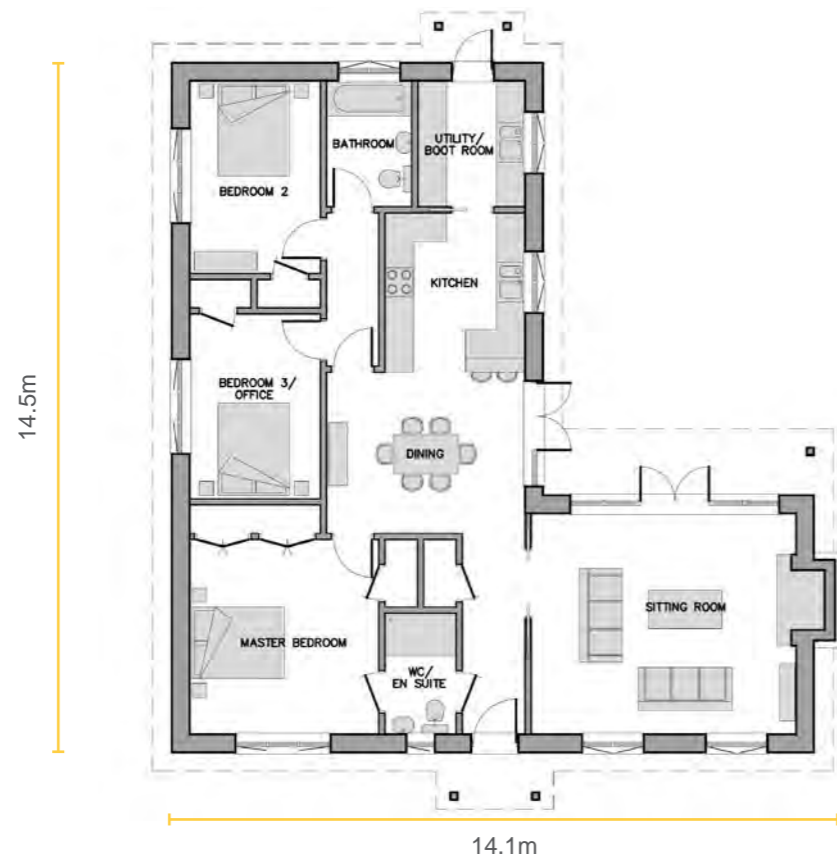
Sitting Room: 5.0m x 4.1m
 Kitchen / Dining: 6.5m x 3.2m
 Utility: 2.4m x 1.8m

Master Bedroom: 3.9m x 3.2m
 Bedroom 2: 3.4m x 3.1m
 Bedroom 3: 2.7m x 2.5m



THE SYCAMORE

This design enjoys a spacious and light sitting room with large French doors for indoor/outdoor summer living, and a beautiful fireplace for cosy winter times. A useful utility/boot room leads to an informal kitchen/dining area. Three double bedrooms, all with built in storage, are provided.



Gross External Area: 145 sq.m (1,561 sq.ft)

Maximum Ridge Height: 5.5m

Ground Floor

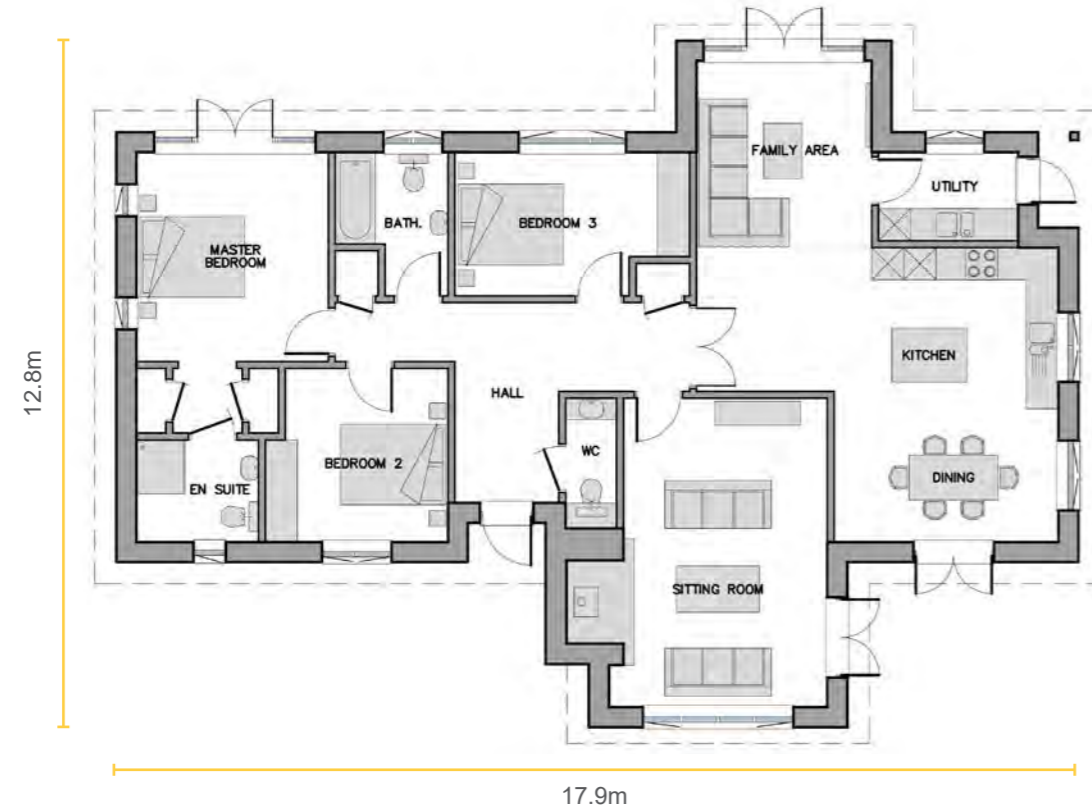
Sitting Room: 5.6m x 4.7m
 Kitchen: 3.4m x 3.0m
 Dining: 4.2m x 3.4m
 Utility/ Boot Room: 2.7m x 2.3m

Master Bedroom: 4.1m x 4.0m
 Bedroom 2: 4.1m x 2.8m
 Bedroom 3: 3.9m x 2.8m



THE ACACIA

This bungalow design offers a striking mix of contemporary glazing with traditional features such as the stone chimney and stylish green windows. The internal layout provides an excellent family hub, a separate formal sitting room and three double bedrooms.



Gross External Area: 164 sq.m (1,765 sq.ft)

Maximum Ridge Height: 6.0m

Ground Floor

Sitting Room:	5.8m x 4.1m	Master Bedroom:	3.9m x 3.6m
Kitchen/ Dining:	5.5m x 4.2m	Bedroom 2:	3.4m x 3.2m
Family Area:	3.5m x 3.3m	Bedroom 3:	4.4m x 2.7m
Utility:	2.6m x 1.7m		



THE WILLOWS

The striking roof lines of this design produce an amazing effect, while the cedar cladding allows the property to blend effortlessly into its surroundings. The bespoke glazing complements the grey colour of the premium quality Spanish roof tiles.



Gross External Area: 180 sq.m (1,938 sq.ft)

Maximum Ridge Height: 6.1m

Ground Floor

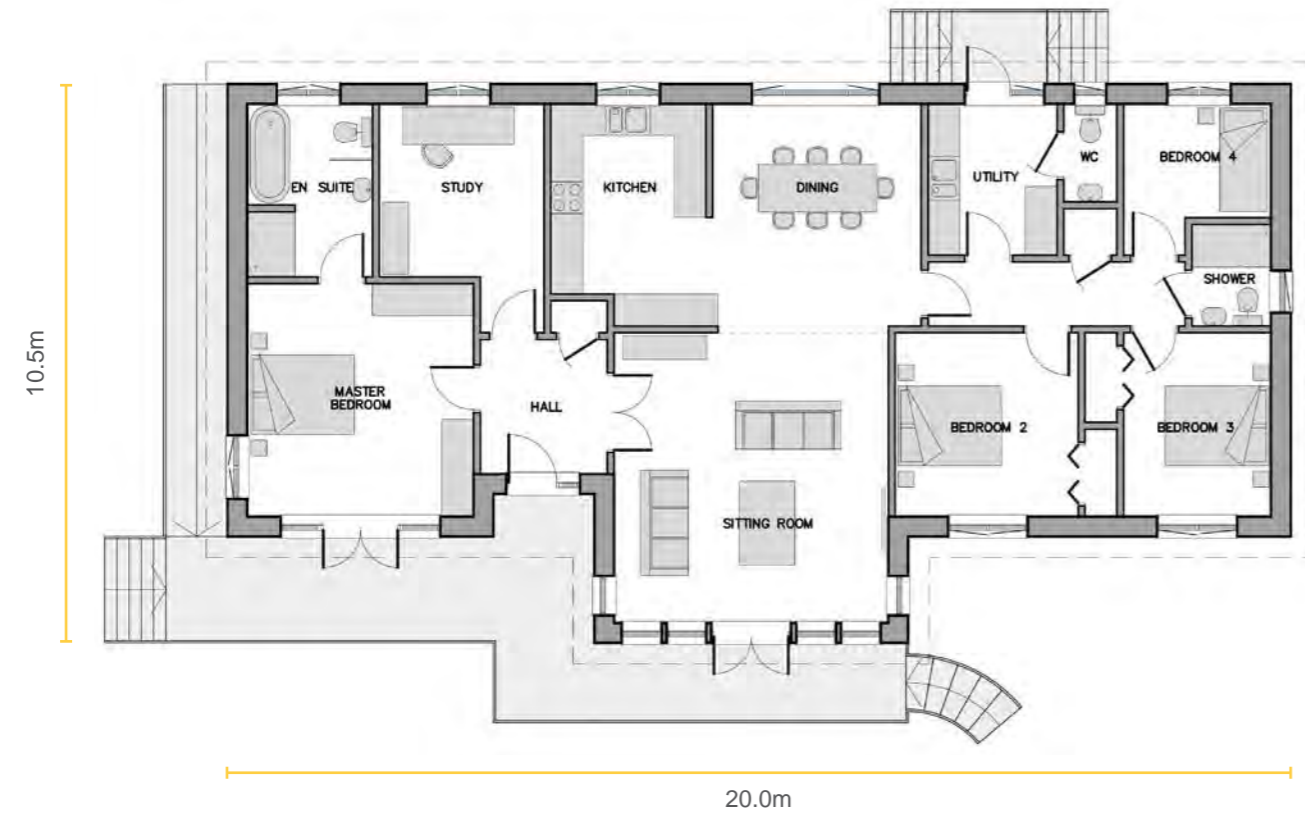
Sitting/ Dining: 8.4m x 5.5m
 Kitchen: 4.8m x 3.6m
 Study: 3.2m x 2.8m
 Utility: 3.2m x 1.8m

Master Bedroom: 4.3m x 4.0m
 Bedroom 2: 4.4m x 3.0m
 Bedroom 3: 4.4m x 3.0m



SEA VIEW

This design uses exterior weatherboarding to create a coastal feel, and with its raised position and glazing to the front of the sitting room, would make the most of any sea views available. The property is deceptively spacious, housing four bedrooms and a study.



Gross External Area: 180 sq.m (1,938 sq.ft)

Maximum Ridge Height: 5.2m

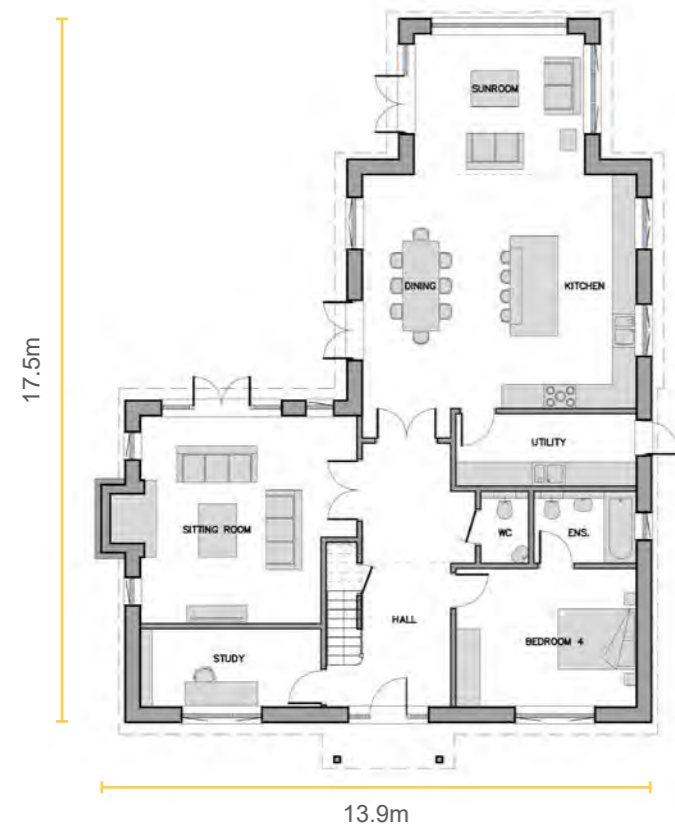
Ground Floor

Sitting Room:	5.5m x 5.2m	Master Bedroom:	4.4m x 4.3m
Kitchen:	3.6m x 2.9m	Bedroom 2:	3.5m x 3.5m
Dining:	4.2m x 3.9m	Bedroom 3:	3.5m x 2.8m
Study:	3.3m x 3.1m	Bedroom 4:	2.8m x 2.1m
Utility:	2.9m x 2.4m		



THE HAMBLEdene

Beautifully linking the inside to the outside with three sets of French doors from the living areas, this design also offers a stunning sunroom with apex glazing. The property comprises four double bedrooms, three with ensuite.



Gross External Area: 278 sq.m (2,992 sq.ft)

Maximum Ridge Height: 6.9m

Ground Floor

- Sitting Room: 5.4m x 5.2m
- Kitchen/ Dining: 6.8m x 5.8m
- Sunroom: 4.3m x 3.5m
- Study: 4.5m x 2.0m
- Utility: 4.5m x 1.8m
- Bedroom 4: 4.5m x 3.5m

First Floor

- Master Bedroom: 4.4m x 3.8m
- Bedroom 2: 4.9m x 3.1m
- Bedroom 3: 4.5m x 3.8m



THE CHIDDINGSTONE

This chalet bungalow design offers flexibility in living arrangements, with the master and one other bedroom on the ground floor, and two further bedrooms in the eaves upstairs. At the back there's a light filled sitting room and sunroom, perfect for enjoying the garden.



Gross External Area: 287 sq.m (3,089 sq.ft)

Maximum Ridge Height: 7.1m

Ground Floor

Sitting Room:	5.9m x 4.7m
Kitchen:	4.3m x 3.5m
Dining:	7.1m x 4.0m
Sunroom:	3.6m x 3.4m
Study:	3.5m x 2.0m
Utility:	2.8m x 2.3m
Master Bedroom:	4.7m x 3.6m
Bedroom 2:	3.5m x 3.5m

First Floor

Bedroom 3:	5.4m x 4.0m
Bedroom 4:	4.3m x 3.5m





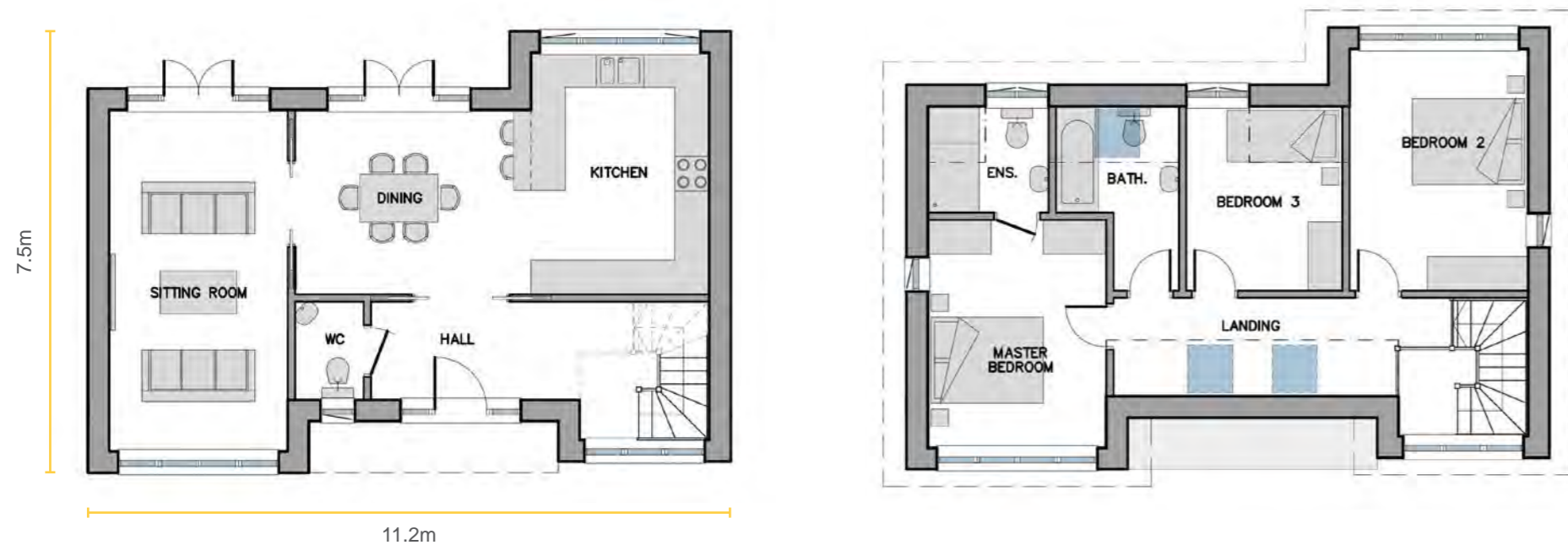
BARNS

Over recent years, conversions and new barn style builds have become increasingly popular throughout the UK, especially since the change in permitted development rights has made it easier to convert redundant agricultural buildings into family homes.

By combining the traditional method of timber frame construction with modern materials and technology, we produce beautiful homes of unrivalled warmth and charm that will last for generations.

LITTLE BARN

This barn inspired design uses timber cladding for a rural style, with large gable windows adding impact to the appearance. The sitting room stretches the depth of the property, enjoying light from dual aspects. Three good sized bedrooms complete the first floor.



Gross External Area: 149 sq.m (1,604 sq.ft)

Maximum Ridge Height: 7.1m

Ground Floor

Sitting Room: 6.0m x 3.1m
 Kitchen: 4.2m x 3.1m
 Dining: 4.1m x 3.2m

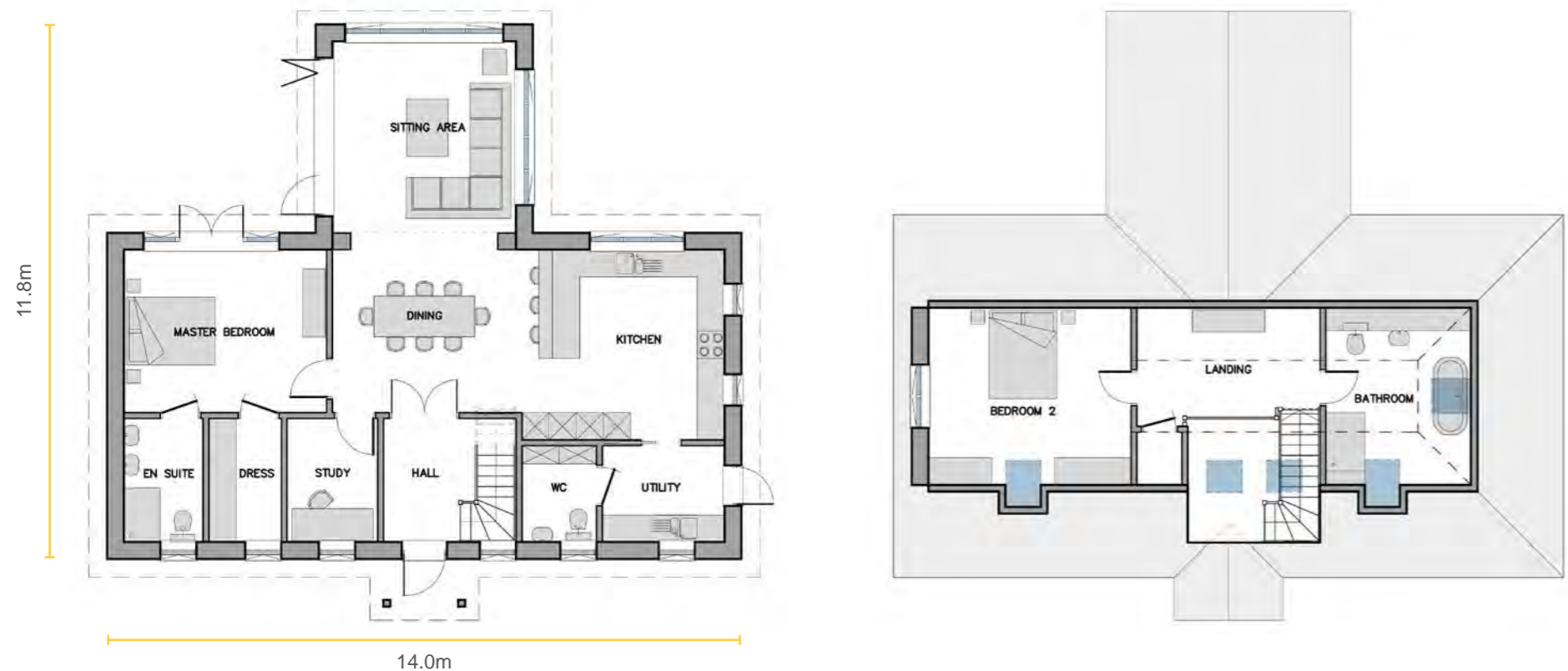
First Floor

Master Bedroom: 4.0m x 3.1m
 Bedroom 2: 4.2m x 3.1m
 Bedroom 3: 3.2m x 2.7m



HONEYSUCKLE BARN

Our compact barn design is a delight with soft timber cladding and stylish window frames. The triple aspect sitting area has a vaulted ceiling with full height gable glazing. The property includes a spacious living area plus a master bedroom suite and a further bedroom and bathroom on the first floor.



Gross External Area: 179 sq.m (1,927 sq.ft)

Maximum Ridge Height: 6.3m

Ground Floor

Sitting Area: 4.2m x 4.0m
 Kitchen: 4.6m x 4.2m
 Dining: 4.0m x 3.6m
 Study: 2.7m x 2.0m
 Utility: 2.7m x 2.1m
 Master Bedroom: 4.5m x 3.6m

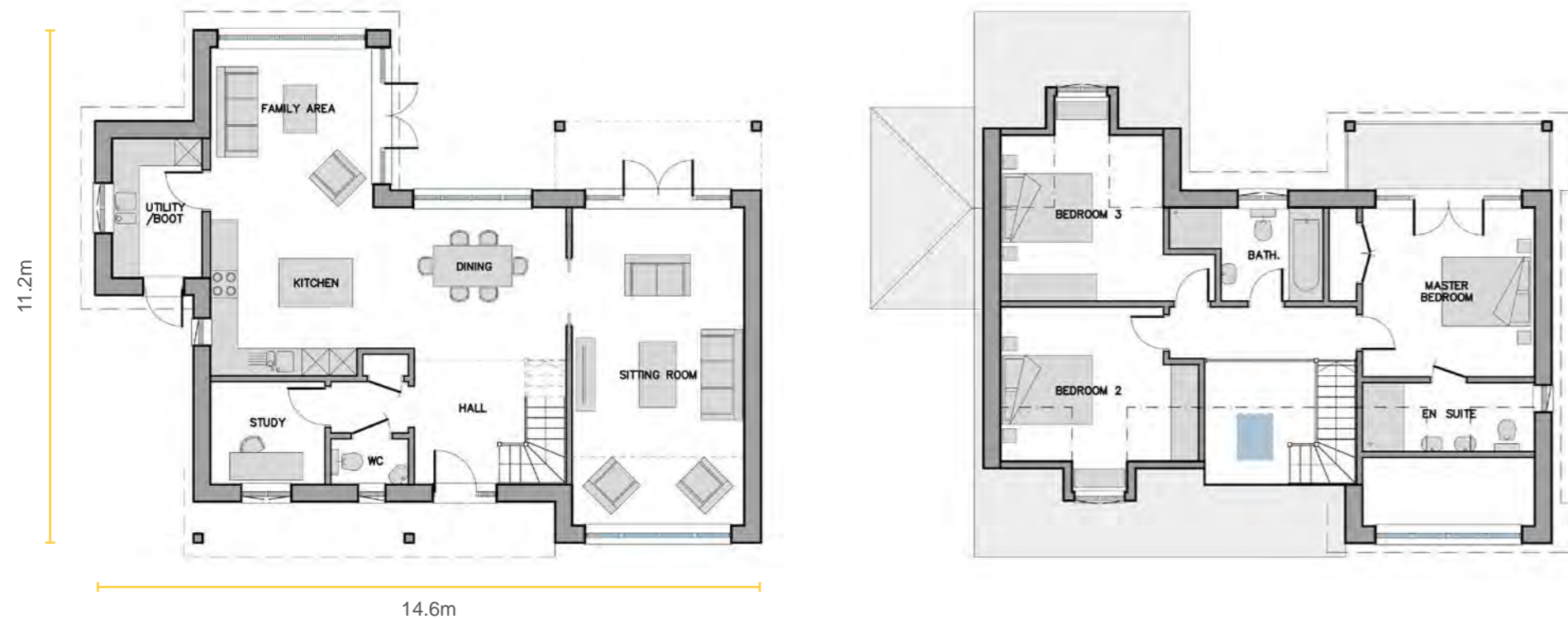
First Floor

Bedroom 2: 4.5m x 3.9m



MEADOW BARN

This design makes the most of surrounding views with two sets of French doors and ample floor to ceiling glazing. With generous open plan areas and a beautiful timber framed balcony, this home effortlessly mixes traditional design with contemporary living.



Gross External Area: 204 sq.m (2,196 sq.ft)

Maximum Ridge Height: 7.9m

Ground Floor

Sitting Room:	7.0m x 3.8m
Kitchen:	3.6m x 3.4m
Dining:	4.2m x 3.3m
Family Area:	3.8m x 3.6m
Study:	2.5m x 2.3m
Utility/ Boot:	3.1m x 2.0m

First Floor

Master Bedroom:	3.8m x 3.7m
Bedroom 2:	4.3m x 3.4m
Bedroom 3:	3.6m x 3.6m



BREWHOUSE BARN

This design has a rustic, country feel from the outside with light timber cladding, but inside benefits from a contemporary open plan kitchen and family area as well as a separate sitting room with a vaulted ceiling and complimentary apex glazing.



Gross External Area: 235 sq.m (2,530 sq.ft)

Maximum Ridge Height: 6.8m

Ground Floor

- Sitting Room: 5.0m x 4.3m
- Kitchen: 4.2m x 3.5m
- Dining/ Family Area: 7.3m x 4.2m
- Study: 3.5m x 2.2m
- Utility: 3.0m x 2.4m
- Bedroom 4: 4.9m x 3.5m

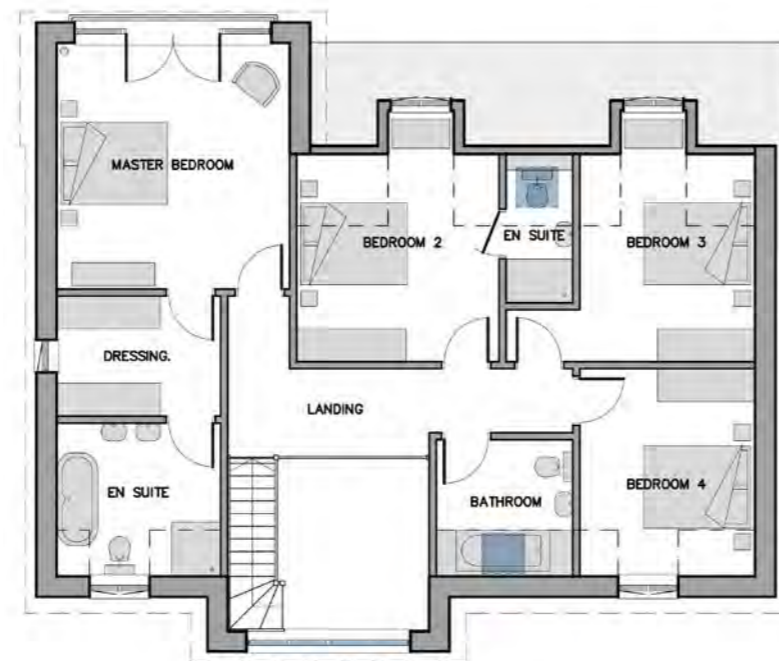
First Floor

- Master Bedroom: 4.9m x 3.9m
- Bedroom 2: 5.4m x 2.9m
- Bedroom 3: 3.9m x 2.2m



MALTHOUSE BARN

A double height entrance hall with a fully glazed front gable greets you on approach. A generous open plan living area leads out to the garden and there are four double bedrooms upstairs, two ensuite and a family bathroom.



Gross External Area: 254 sq.m (2,734 sq.ft)

Maximum Ridge Height: 8.1m

Ground Floor

- Sitting Room: 5.7m x 4.3m
- Kitchen: 3.9m x 3.5m
- Dining/ Family Area: 8.4m x 3.8m
- Study: 3.0m x 2.5m
- Utility: 3.5m x 1.8m

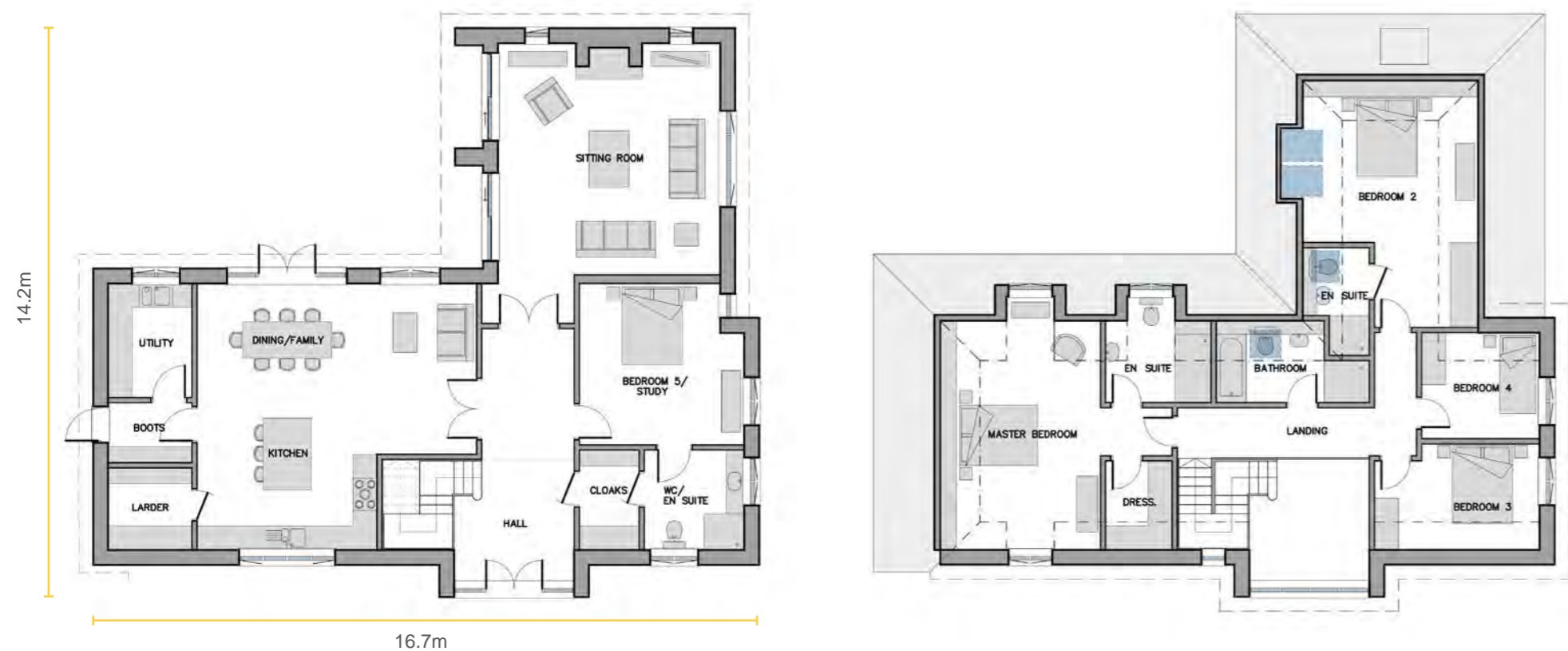
First Floor

- Master Bedroom: 4.5m x 4.3m
- Bedroom 2: 3.8m x 3.7m
- Bedroom 3: 3.8m x 3.2m
- Bedroom 4: 3.8m x 3.2m



LINHAY BARN

This spectacular design has a beautiful brick and flint exterior and full height glazing to the front elevation. There is a spacious kitchen/dining area and separate sitting room with feature fireplace. On the first floor the master has its own wing with ensuite and dressing room area.



Gross External Area: 293 sq.m (3,154 sq.ft)

Maximum Ridge Height: 8.1m

Ground Floor

Sitting Room:	5.8m x 5.6m
Kitchen:	4.5m x 2.4m
Dining/ Family Area:	7.0m x 4.3m
Utility:	2.9m x 2.1m
Boots:	2.1m x 1.5m
Bedroom 5/ Study:	4.1m x 4.0m

First Floor

Master Bedroom:	5.7m x 4.0m
Bedroom 2:	6.2m x 4.4m
Bedroom 3:	4.1m x 2.7m
Bedroom 4:	3.0m x 2.7m



HIGHFIELD BARN

This stunning U-shaped barn has an agricultural look and feel. The delightful patio area is afforded privacy on three sides and can be accessed from the spacious kitchen/dining area, the sitting room and the bedroom wing.



Gross External Area: 365 sq.m (3,929 sq.ft)

Maximum Ridge Height: 6.8m

Ground Floor

- Sitting Room: 6.9m x 5.8m
- Kitchen: 5.9m x 5.8m
- Dining Area: 4.3m x 4.2m
- Family Area: 5.8m x 4.4m
- Study: 4.0m x 4.0m
- Utility: 4.5m x 2.5m
- Master Bedroom: 5.8m x 5.0m
- Bedroom 2: 4.0m x 4.0m

First Floor

- Bedroom 3: 5.0m x 4.5m
- Bedroom 4: 4.5m x 3.4m





TRADITIONAL

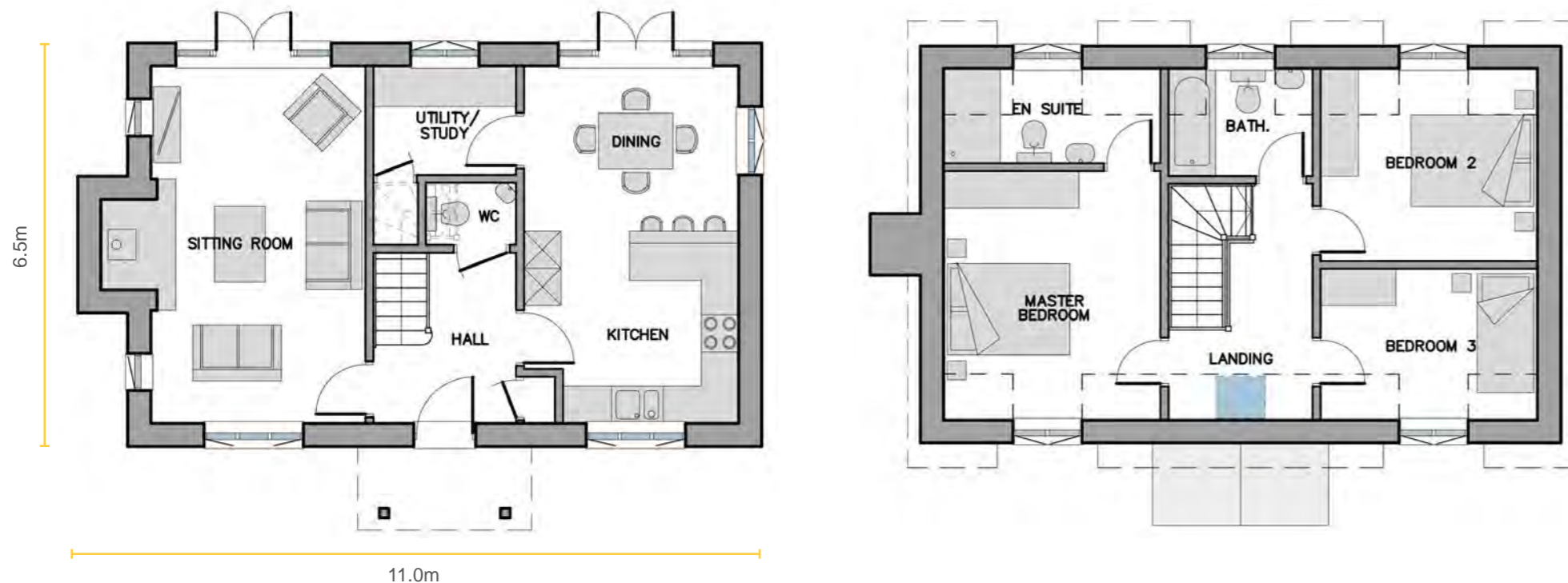
Taking aspects of past styles and incorporating them in a new build home is ideal for many self-builders as it gives them the traditional look, with the benefits of modern technology.

Using particular exterior finishes, certain architectural shapes and features, a new home can have its own character and period charm.

With Scandia-Hus' superior building standards it means a more comfortable way of living, with minimal maintenance, stable temperatures all year round and a layout that suits contemporary family living.

THE COLCHESTER

This design reflects a classic country cottage with its symmetrical look and dormer windows. Inside, however, is suited to the contemporary family with an open plan kitchen / dining room and large sitting room. Upstairs there are three bedrooms and a family bathroom.



Gross External Area: 134 sq.m (1,442 sq.ft)

Maximum Ridge Height: 7.7m

Ground Floor

Sitting Room: 5.8m x 3.5m
 Kitchen/ Dining: 5.8m x 3.5m
 Utility/ Study: 2.3m x 1.8m

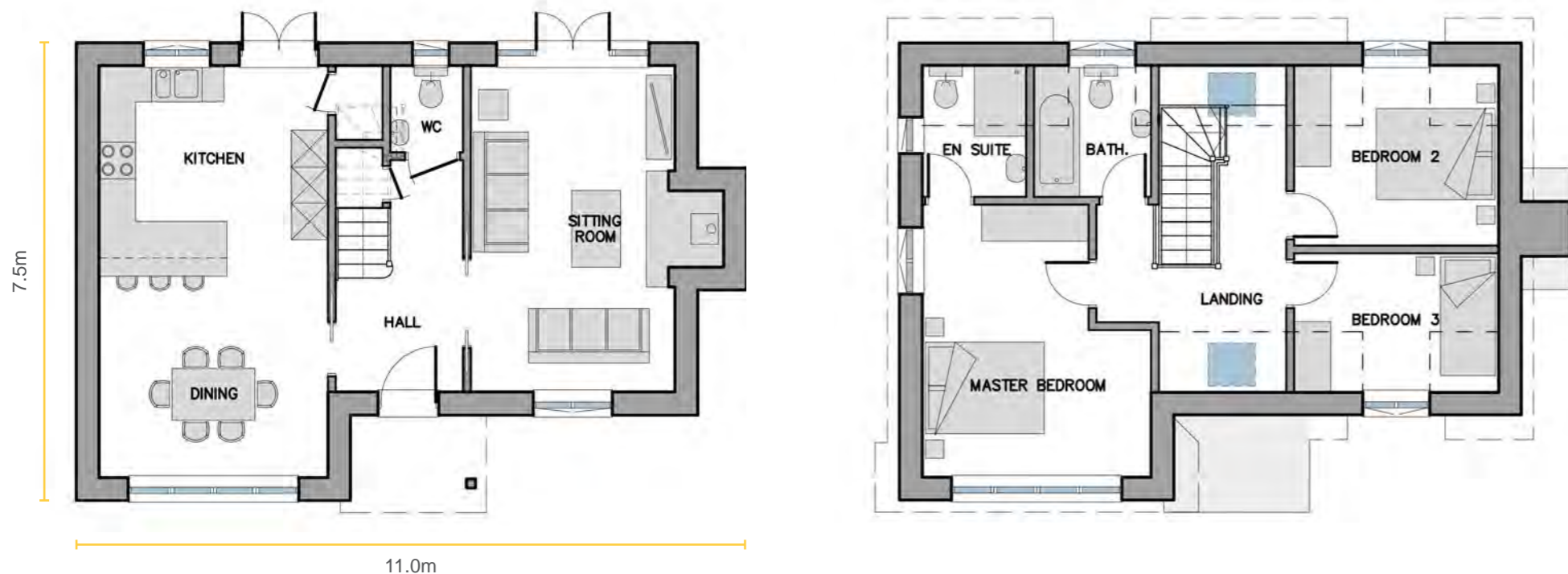
First Floor

Master Bedroom: 4.1m x 3.5m
 Bedroom 2: 3.5m x 3.2m
 Bedroom 3: 3.5m x 2.5m



THE BANBURY

Our small but perfectly formed design includes an open plan kitchen / dining area, as well as a separate living room with fireplace. The clad gable with architectural glazing, and the mix of grey and timber details on the exterior, make this an attractive three bedroom family home.



Gross External Area: 139 sq.m (1,496 sq.ft)

Maximum Ridge Height: 7.2m

Ground Floor

Sitting Room: 5.4m x 3.4m
 Kitchen/Dining: 6.8m x 3.8m

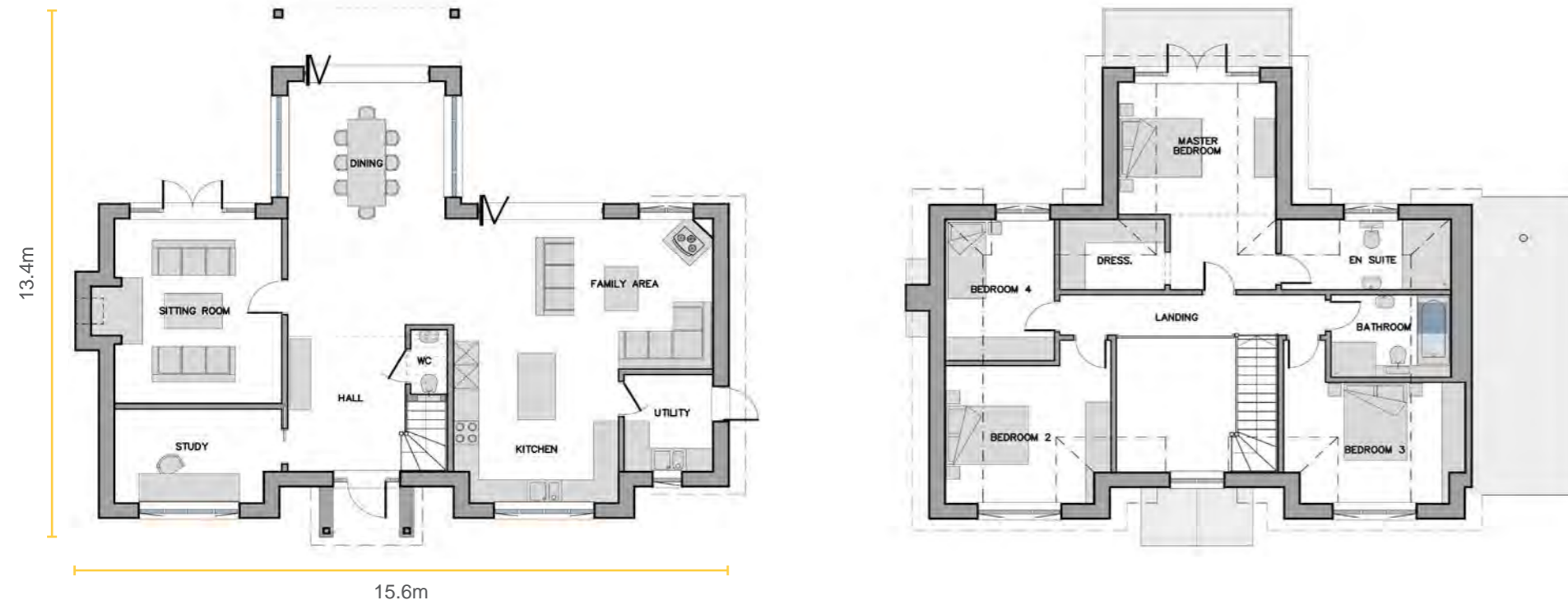
First Floor

Master Bedroom: 4.5m x 3.8m
 Bedroom 2: 3.4m x 3.0m
 Bedroom 3: 3.4m x 2.3m



THE AMBERLEY

This design is full of character with many traditional features – handmade clay tiles, paired with timber cladding, an oak front porch and balcony to the rear. The property has a large open plan living area, two further reception rooms and four well proportioned bedrooms.



Gross External Area: 247 sq.m (2,659 sq.ft)

Maximum Ridge Height: 7.6m

Ground Floor

- Sitting Room: 4.7m x 4.0m
- Kitchen: 4.6m x 3.9m
- Family Area: 6.4m x 3.8m
- Dining: 3.8m x 3.5m
- Study: 3.6m x 2.4m
- Utility: 2.5m x 2.1m

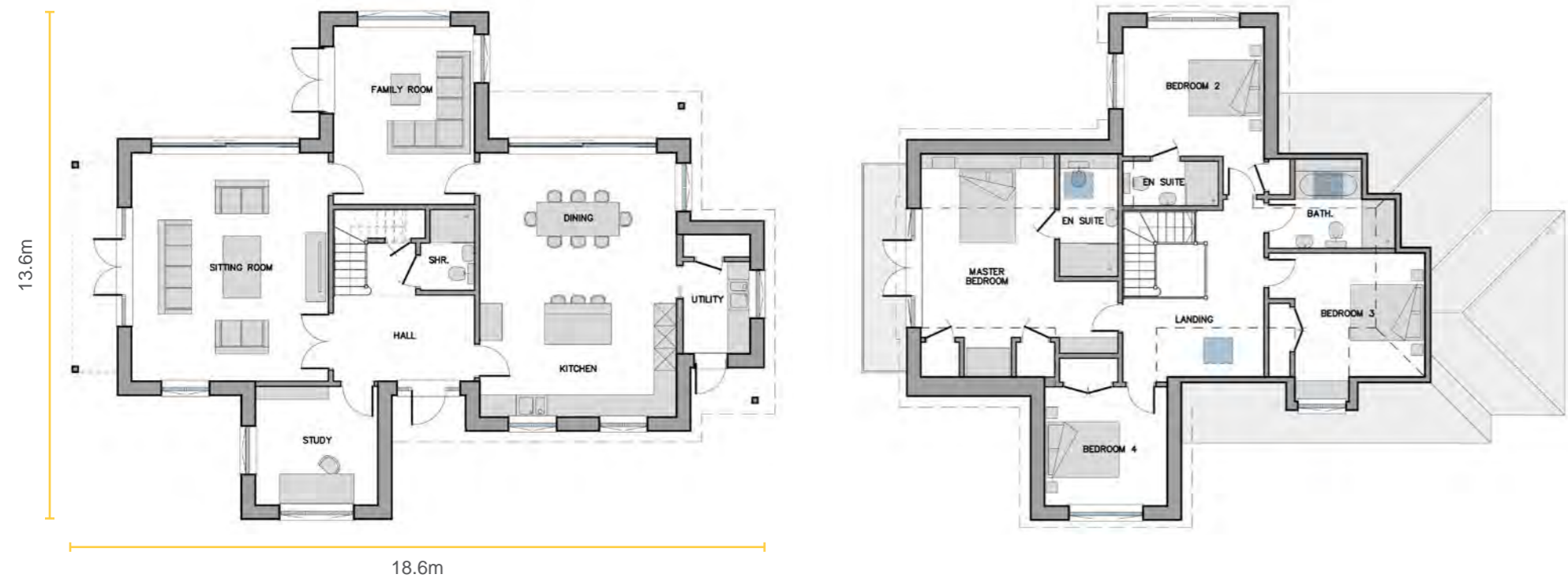
First Floor

- Master Bedroom: 5.3m x 3.8m
- Bedroom 2: 3.6m x 3.5m
- Bedroom 3: 3.4m x 3.1m
- Bedroom 4: 3.6m x 2.6m



THE COURTFIELD

A varied mix of differing roof heights and traditionally proportioned architectural features provides a versatile design that oozes character. A wide, recessed entrance porch leads to a welcoming hallway and onto a flowing internal arrangement of rooms centred around an elegant staircase.



Gross External Area: 272 sq.m (2,928 sq.ft)

Maximum Ridge Height: 7.2m

Ground Floor

- Sitting Room: 6.1m x 5.3m
- Kitchen/ Dining: 7.1m x 5.3m
- Family Room: 4.8m x 3.8m
- Study: 3.2m x 3.3m
- Utility: 2.5m x 1.8m

First Floor

- Master Bedroom: 6.0m x 3.6m
- Bedroom 2: 3.8m x 3.5m
- Bedroom 3: 3.5m x 3.3m
- Bedroom 4: 3.3m x 3.2m



THE LANGFORD

This traditional design creates a warm and inviting feel with its timber details and grand inglenook fireplace in the lounge. The open plan kitchen / dining and family area boasts plenty of space to house the occupants of the five first floor bedrooms.



Gross External Area: 306 sq.m (3,294 sq.ft)

Maximum Ridge Height: 6.8m

Ground Floor

Sitting Room: 7.0m x 4.3m
 Kitchen: 4.3m x 3.9m
 Dining/ Family: 6.5m x 4.3m
 Study: 4.3m x 3.3m
 Utility: 3.7m x 3.0m

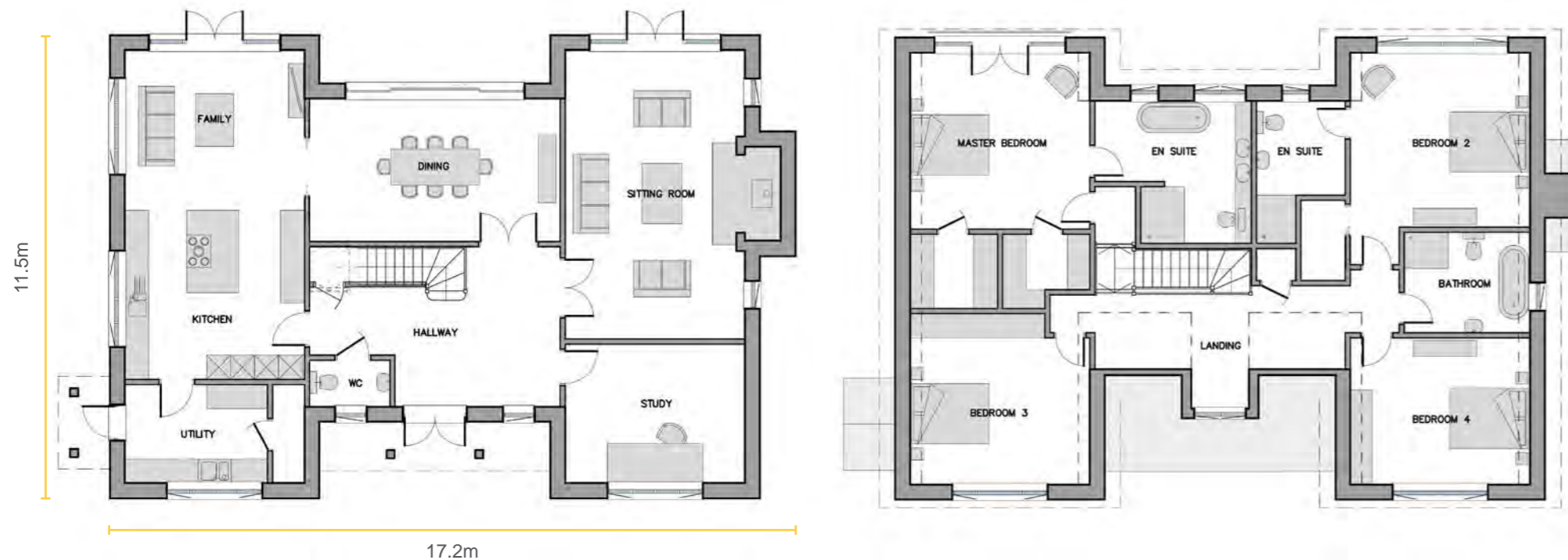
First Floor

Master Bedroom: 4.3m x 4.2m
 Bedroom 2: 4.3m x 3.8m
 Bedroom 3: 4.3m x 3.1m
 Bedroom 4: 4.3m x 3.1m
 Bedroom 5: 4.8m x 2.4m



OAKLEIGH HOUSE

This design has a classic mock Tudor exterior look. Inside, however, reflects contemporary life with an open plan kitchen / family area and three sets of doors opening up the house to the garden. Oakleigh House is available to view at our show centre in Sussex. Contact us if you would like to visit.



Gross External Area: 337 sq.m (3,627 sq.ft)

Maximum Ridge Height: 7.9m

Ground Floor

Sitting Room: 7.2m x 4.5m
 Kitchen/ Family: 8.2m x 4.5m
 Dining: 6.3m x 3.6m
 Study: 4.5m x 3.5m
 Utility: 3.6m x 2.5m

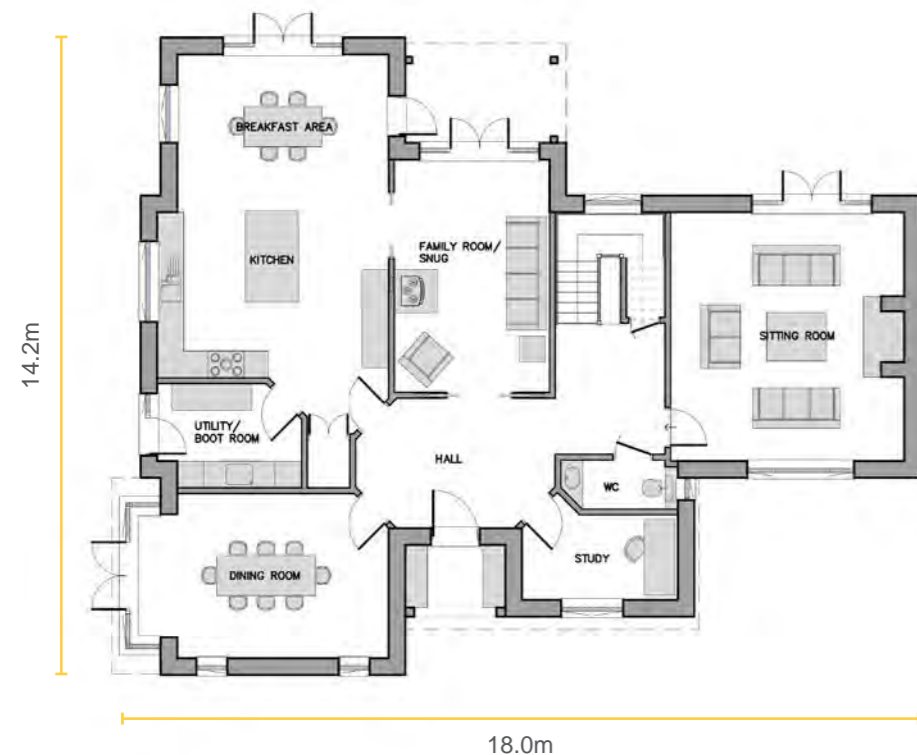
First Floor

Master Bedroom: 4.5m x 4.4m
 Bedroom 2: 4.5m x 4.3m
 Bedroom 3: 4.5m x 4.3m
 Bedroom 4: 4.5m x 3.7m



THE CRAMLINGTON

The Cramlington is a beautiful, bespoke energy-efficient home. Fittleworth stone clads the outside along with red brick, and the roof is covered with handmade clay tiles. The bespoke timber casement windows with Georgian bars give the building a truly traditional look.



Gross External Area: 350 sq.m (3,767 sq.ft)

Maximum Ridge Height: 8.3m

Ground Floor

- Sitting Room: 5.6m x 5.3m
- Kitchen/ Breakfast Area: 7.7m x 5.2m
- Family Room/ Snug: 5.2m x 3.5m
- Dining Room: 5.7m x 3.7m
- Study: 3.5m x 1.9m
- Utility/ Boot Room: 2.8m x 2.3m

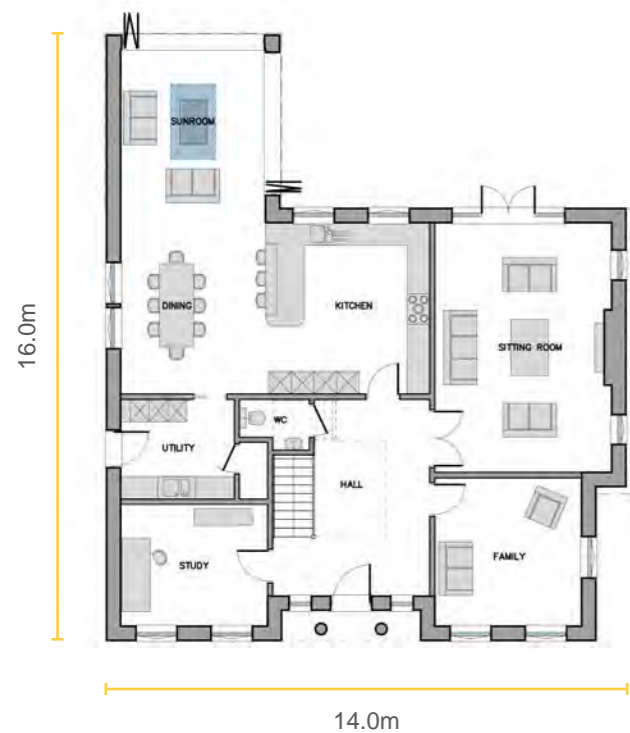
First Floor

- Master Bedroom: 4.8m x 3.6m
- Bedroom 2: 4.9m x 3.6m
- Bedroom 3: 4.8m x 3.6m
- Bedroom 4: 4.0m x 3.3m



THE LOCKWOOD

This Georgian inspired design has a classical external appearance with its sliding sash style windows and porch columns, but a modern internal layout with an open plan kitchen/dining area and sunroom with bi-fold doors. The house is generously proportioned, with five bedrooms over three floors.



Gross External Area: 403 sq.m (4,338 sq.ft)

Maximum Ridge Height: 9.0m

Ground Floor

- Sitting Room: 6.6m x 4.7m
- Kitchen/Dining: 8.2m x 4.6m
- Sunroom: 4.6m x 3.9m
- Family Room: 3.9m x 3.9m
- Study: 3.9m x 3.2m
- Utility: 3.0m x 2.6m

First Floor

- Master Bedroom: 5.8m x 4.6m
- Bedroom 2: 3.9m x 3.9m
- Bedroom 3: 3.9m x 3.9m

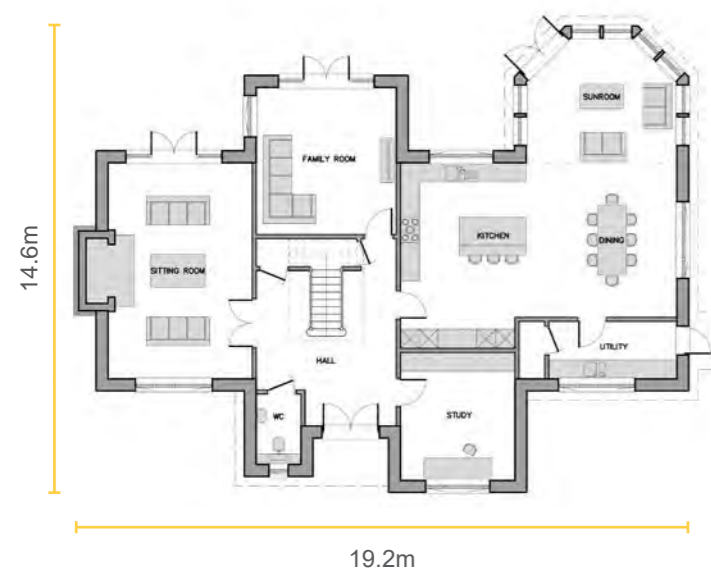
Second Floor

- Bedroom 4: 4.0m x 2.7m
- Bedroom 5: 4.5m x 4.5m



THE RIDGEWAY

This design benefits from extremely generous proportions, with an open plan kitchen/dining and sunroom area, as well as a separate family space and sitting room with fireplace. Spread over the first and second floor are five double bedrooms, four of which are ensuite.



Gross External Area: 416 sq.m (4,478 sq.ft)

Maximum Ridge Height: 9.1m

Ground Floor

Sitting Room: 6.8m x 4.5m
 Kitchen/ Dining: 8.6m x 5.8m
 Sunroom: 4.7m x 3.9m
 Family Room: 4.6m x 4.4m
 Study: 4.0m x 3.6m
 Utility: 4.0m x 1.8m

First Floor

Master Bedroom: 4.6m x 4.4m
 Bedroom 2: 4.5m x 3.8m
 Bedroom 3: 4.6m x 4.2m
 Bedroom 4: 4.3m x 3.6m

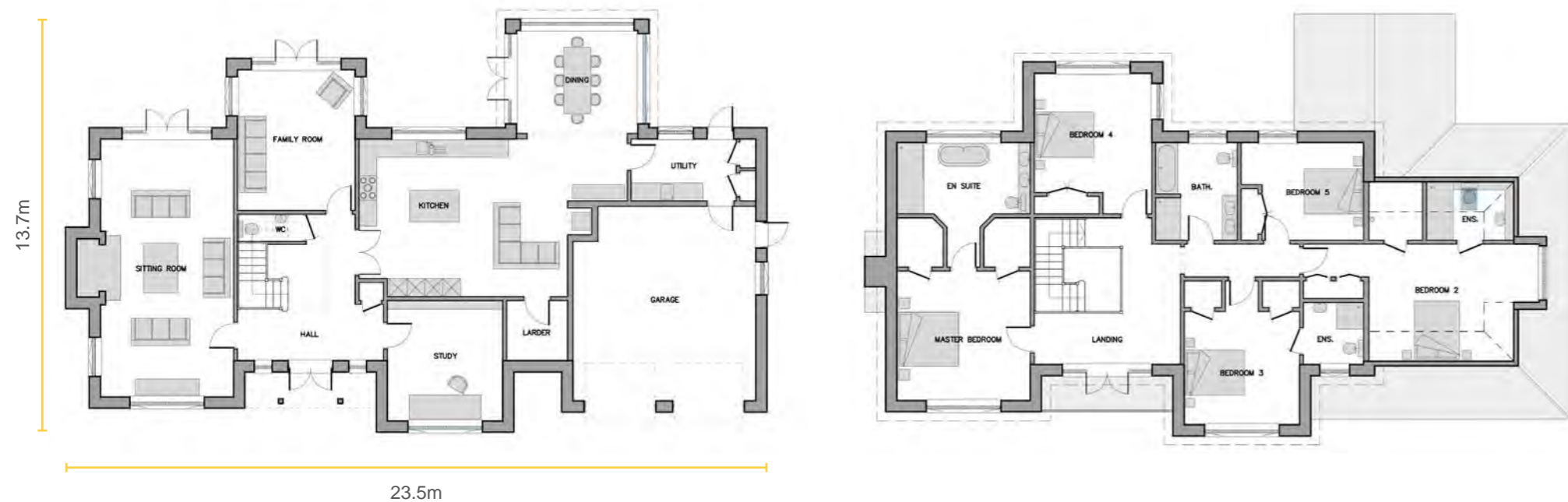
Second Floor

Bedroom 5: 4.8m x 4.0m
 Snug: 4.2m x 1.9m



THE WOODLANDS

This beautiful, traditional five bedroom home blends brickwork, timber cladding and impressive double oak doors. The ground floor accommodation features a large sitting room with inglenook fireplace, a vast kitchen, breakfast room and sunroom, as well as a separate family room and study.



Gross External Area: 429 sq.m (4,618 sq.ft)

Maximum Ridge Height: 9.9m

Ground Floor

Sitting Room:	8.6m x 4.5m
Kitchen:	7.0m x 5.2m
Dining:	4.1m x 3.4m
Family Room:	4.7m x 3.9m
Study:	4.0m x 3.9m
Utility:	3.5m x 2.1m
Garage:	6.5m x 6.1m

First Floor

Master Bedroom:	4.5m x 4.3m
Bedroom 2:	4.9m x 4.0m
Bedroom 3:	3.9m x 3.8m
Bedroom 4:	4.0m x 3.9m
Bedroom 5:	4.0m x 3.2m



THE HAMSHAW

An imposing, characterful design, The Hamshaw spans three storeys incorporating an open plan kitchen / dining / family area, a sitting room, snug, and study on the ground floor, as well as five double bedrooms, four ensuites, and a media room on the remaining two floors.



Gross External Area: 444 sq.m (4,779 sq.ft)

Maximum Ridge Height: 9.2m

Ground Floor

Sitting Room: 6.9m x 4.5m
 Kitchen/ Family Area: 8.8m x 4.7m
 Dining: 4.3m x 4.0m
 Snug: 4.5m x 3.7m
 Study: 3.7m x 3.5m
 Utility: 5.1m x 3.0m

First Floor

Master Bedroom: 4.5m x 4.4m
 Bedroom 2: 4.8m x 3.8m
 Bedroom 3: 4.5m x 4.2m
 Bedroom 4: 5.6m x 3.5m

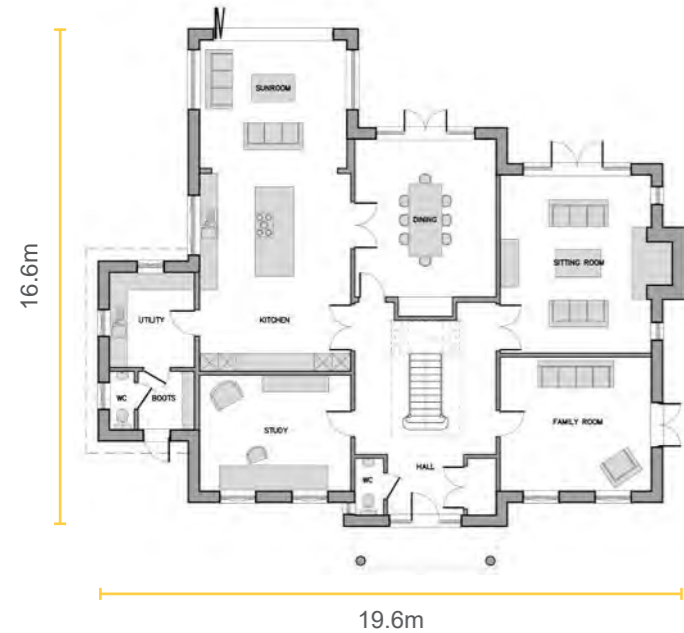
Second Floor

Bedroom 5: 5.0m x 3.4m
 Media Room: 5.7m x 5.0m



THE HANOVER

The Hanover is a beautiful Georgian style home which successfully blends a traditional external appearance with large internal areas, perfect for modern living. There is a spacious kitchen which flows into a well-lit sunroom with bi-fold doors, and a separate dining room and sitting room.



Gross External Area: 555 sq.m (5,974 sq.ft)

Maximum Ridge Height: 9.0m

Ground Floor

Sitting Room: 6.0m x 5.0m
 Kitchen: 6.6m x 5.0m
 Sunroom: 4.9m x 4.3m
 Dining: 5.3m x 4.7m
 Family Room: 5.0m x 4.5m
 Study: 5.0m x 3.9m
 Utility: 3.2m x 2.8m

First Floor

Master Bedroom 5.0m x 4.7m
 Bedroom 2: 4.7m x 4.3m
 Bedroom 3: 5.0m x 4.7m
 Bedroom 4: 5.0m x 3.6m

Second Floor

Bedroom 5: 3.9m x 3.7m
 Hobbies/ Media: 8.4m x 5.7m





CONTEMPORARY

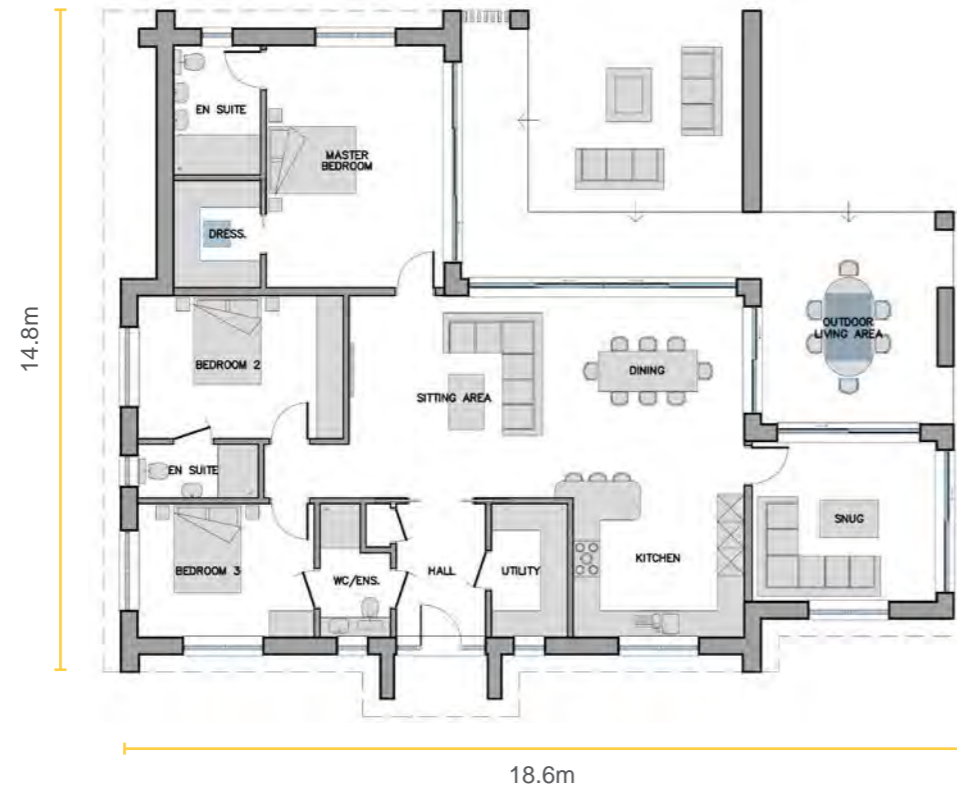
Contemporary designs have seen a huge rise in popularity in recent years. The designs vary widely, but focus on clean lines, angular roofs, open plan layouts and an abundance of glazing.

Whether it is the appeal of maximising light, the feeling of space, or trying to make the most of your plot's stunning views, we will work with you to design and build a contemporary home to suit your lifestyle.

If you would like to see a wider range of modern house styles, please see our separate brochure – Contemporary Designs.

THE LODGE

A mix of stone cladding, vertical timber and render to the elevations is brilliantly offset by the large sliding doors to the master bedroom, dining area and snug allowing multiple routes out to the attractive, covered, outside living area.



Gross External Area: 178 sq.m (1,916 sq.ft)

Maximum Ridge Height: 3.2m

Ground Floor

Sitting Area: 5.0m x 4.5m
 Dining: 4.5m x 3.8m
 Kitchen: 3.8m x 3.2m
 Snug: 4.1m x 3.6m
 Utility: 3.0m x 1.7m

Master Bedroom: 5.4m x 4.0m
 Bedroom 2: 4.6m x 3.2m
 Bedroom 3: 4.0m x 3.0m



THE CAVALLO

This incredible design incorporates an eye-catching roof structure, white render and traditional stonework. The property immediately draws you in as you enter the hallway with a view straight through the sitting area. The three bedrooms are accessed from a separate hallway.



Gross External Area: 186 sq.m (2,002 sq.ft)

Maximum Ridge Height: 6.9m

Ground Floor

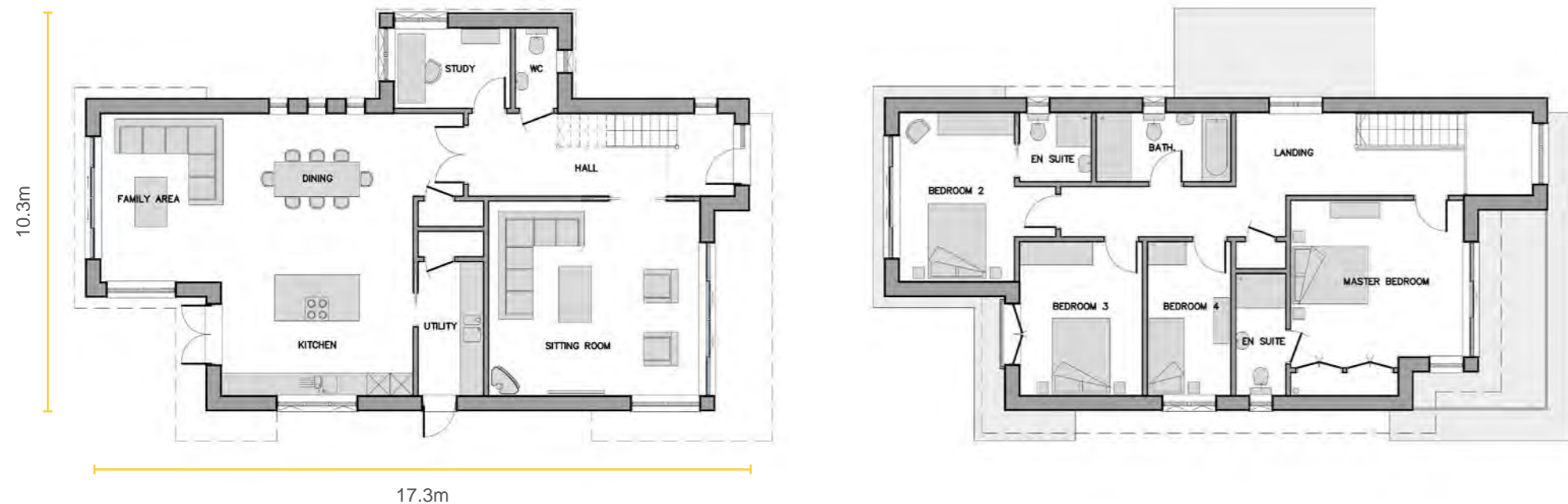
Sitting Area: 5.2m x 4.3m
 Kitchen: 4.4m x 3.5m
 Dining: 4.5m x 3.5m
 Utility: 4.0m x 2.3m
 Study: 3.7m x 2.5m

Master Bedroom: 6.1m x 3.0m
 Bedroom 2: 4.3m x 3.2m
 Bedroom 3: 3.7m x 3.1m



THE RIVIERA

With its strong square lines and abundance of glazing, The Riviera epitomizes the style of modern architecture. Downstairs provides an open plan kitchen/dining/family area as well as a sitting room with woodburning stove, while upstairs accommodates four bedrooms and a bathroom.



Gross External Area: 256 sq.m (2,756 sq.ft)

Maximum Ridge Height: 6.2m

Ground Floor

Sitting Room: 5.5m x 5.1m
 Kitchen/ Dining: 7.4m x 5.0m
 Family Area: 4.4m x 3.1m
 Study: 3.0m x 2.1m
 Utility: 3.5m x 1.7m

First Floor

Master Bedroom: 4.5m x 4.0m
 Bedroom 2: 4.4m x 3.0m
 Bedroom 3: 4.0m x 3.2m
 Bedroom 4: 4.0m x 2.1m



THE ADELIA

Our stunning chalet style design incorporates floor to ceiling glazing, with seven sets of sliding doors, nine Velux windows and glass balconies to the front and rear, flooding the property with light. The Adelia is available to view at our Show Centre in Sussex, please contact us to arrange a visit.



Gross External Area: 260 sq.m (2,799 sq.ft)

Maximum Ridge Height: 7.5m

Ground Floor

- Sitting Room: 6.8m x 4.3m
- Kitchen/Dining: 7.0m x 4.3m
- Family Area: 4.7m x 3.7m
- Study: 3.5m x 2.1m
- Utility: 3.2m x 1.8m

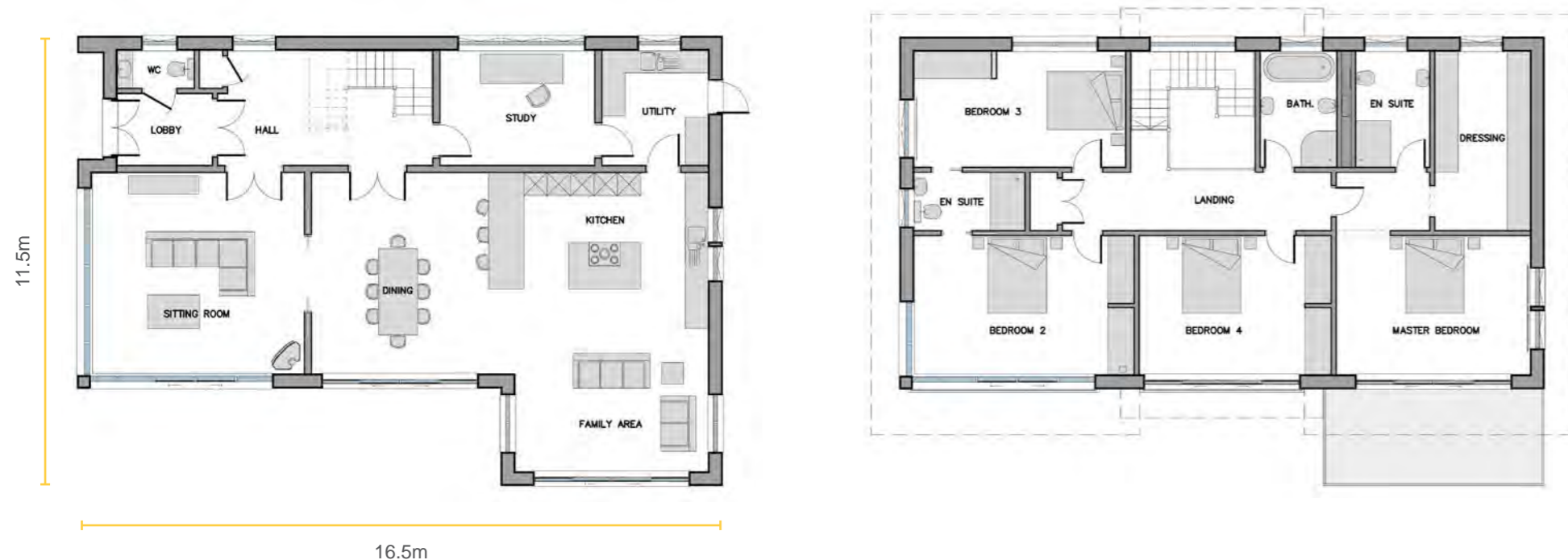
First Floor

- Master Bedroom: 4.9m x 4.3m
- Bedroom 2: 4.4m x 4.3m
- Bedroom 3: 4.4m x 4.3m



THE HILL VIEW

This white, light and bright design enjoys an abundance of glazing, including six sets of sliding doors. There's plenty of space both on the ground and first floor, with open plan living and dining areas, and four double bedrooms.



Gross External Area: 310 sq.m (3,337 sq.ft)

Maximum Ridge Height: 7.2m

Ground Floor

Sitting Room:	5.5m x 5.2m
Kitchen:	5.6m x 4.0m
Dining:	5.2m x 5.2m
Family Area:	5.0m x 3.7m
Study:	4.0m x 3.0m
Utility:	3.0m x 2.7m

First Floor

Master Bedroom:	5.0m x 3.6m
Bedroom 2:	5.7m x 3.6m
Bedroom 3:	5.4m x 3.0m
Bedroom 4:	4.9m x 3.6m



THE PINES

This delightful design is a spacious and unique family home. The main living areas and master bedroom suite are all situated on the first floor, and open onto a vast balcony deck with a perfect covered area to take maximum advantage of outside living.



Gross External Area: 313 sq.m (3,369 sq.ft)

Maximum Ridge Height: 8.5m

Ground Floor

- Sitting Room: 5.7m x 4.8m
- Bedroom 2: 4.6m x 4.5m
- Bedroom 3: 4.6m x 4.5m
- Bedroom 4: 4.6m x 3.6m
- Study: 4.6m x 2.4m
- Utility: 4.6m x 2.0m

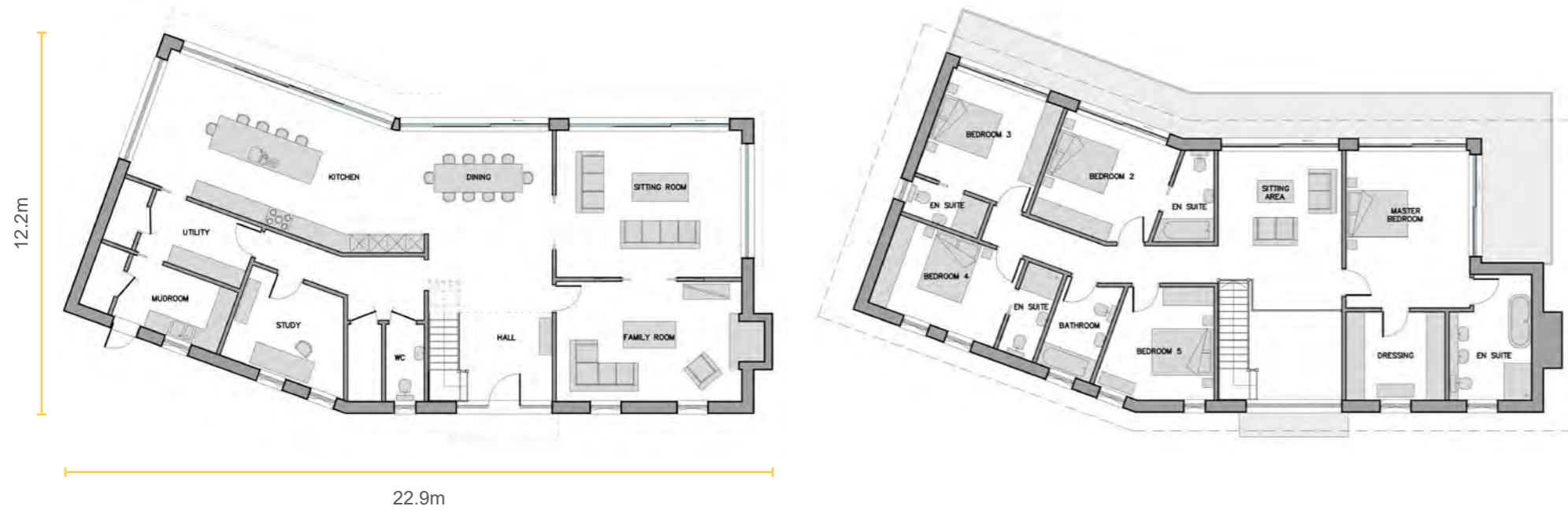
First Floor

- Kitchen: 4.6m x 4.1m
- Dining: 4.8m x 4.1m
- Family Area: 4.8m x 4.7m
- Master Bedroom: 5.0m x 4.6m



THE MILAN

The Milan is a fabulous example of contemporary architecture, with clean lines, white render and floor to ceiling glazing. The kitchen, dining area and sitting room all feature sliding patio doors, while upstairs the double aspect master bedroom, bedroom 2 and 3 all have access to the sweeping balcony.



Gross External Area: 383 sq.m (4,123 sq.ft)

Maximum Ridge Height: 6.3m

Ground Floor

Sitting Room:	6.0m x 4.8m
Kitchen:	7.7m x 4.3m
Dining:	5.0m x 4.0m
Family Room:	6.0m x 3.9m
Study:	4.3m x 3.1m
Utility:	3.6m x 2.1m
Mudroom:	3.6m x 2.1m

First Floor

Master Bedroom:	5.1m x 4.0m
Bedroom 2:	3.9m x 3.6m
Bedroom 3:	3.8m x 3.6m
Bedroom 4:	4.3m x 3.0m
Bedroom 5:	3.9m x 3.6m
Sitting Area:	4.0m x 3.1m



THE FLORENCE

This interesting design combines traditional architectural proportions with some contemporary external finishes. The two front gables are complemented by the garage gable roof, including full height apex glazing. The entrance hall is flooded with light from the galleried landing and Velux windows.



Gross External Area: 449 sq.m (4,833 sq.ft)

Maximum Ridge Height: 7.4m

Ground Floor

Sitting Area:	5.6m x 4.2m
Kitchen/ Dining:	9.2m x 4.3m
Snug:	4.5m x 4.3m
Utility:	4.0m x 2.5m
Study/ Family Room:	4.3m x 4.3m
Bedroom 5:	4.3m x 3.5m
Garage:	6.2m x 5.9m

First Floor

Master Bedroom:	6.0m x 4.3m
Bedroom 2:	4.3m x 3.4m
Bedroom 3:	4.3m x 3.4m
Bedroom 4:	4.3m x 3.4m



VISIT OUR SHOW CENTRE

We would like to invite you to visit us at our Show Centre in Sussex, where we have our stunning contemporary Adelia show home open to view. Please contact us to make an appointment to visit and experience first-hand the exceptional standards of design and construction that have earned us such wide acclaim.



We are open:

09.00 – 17.30 Monday to Thursday

09.00 – 17.00 Friday

10.00 – 16.00 Saturday

Viewing by appointment

Scandia-Hus Business Park, Felcourt Road, East Grinstead, West Sussex, RH19 2LP

01342 838060 / sales@scandia-hus.co.uk / www.scandia-hus.co.uk





Scandia-Hus Business Park, Felcourt Road, East Grinstead, West Sussex, RH19 2LP

www.scandia-hus.co.uk | 01342 838060 | sales@scandia-hus.co.uk